

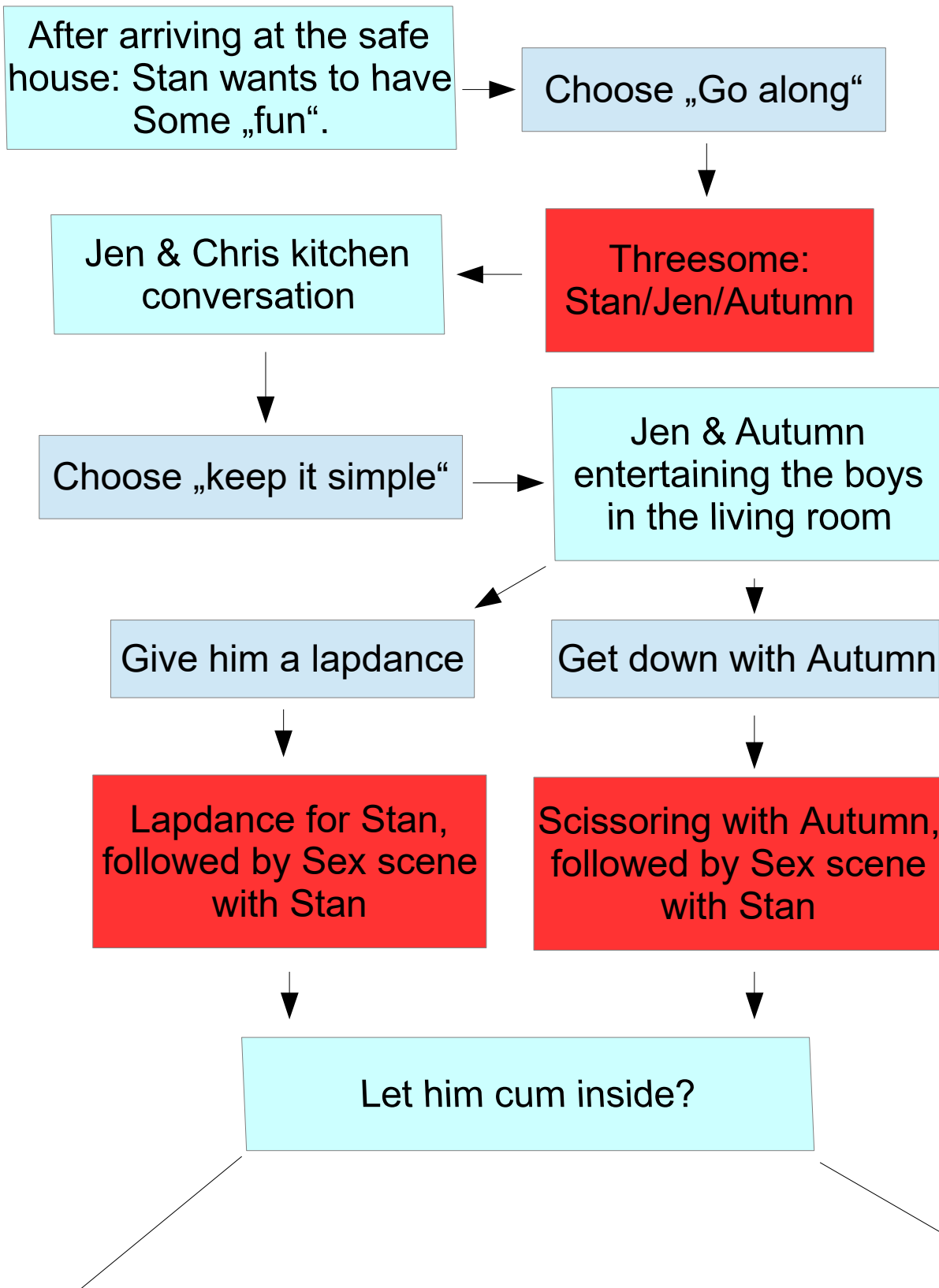
Red Box = Erotic Scene

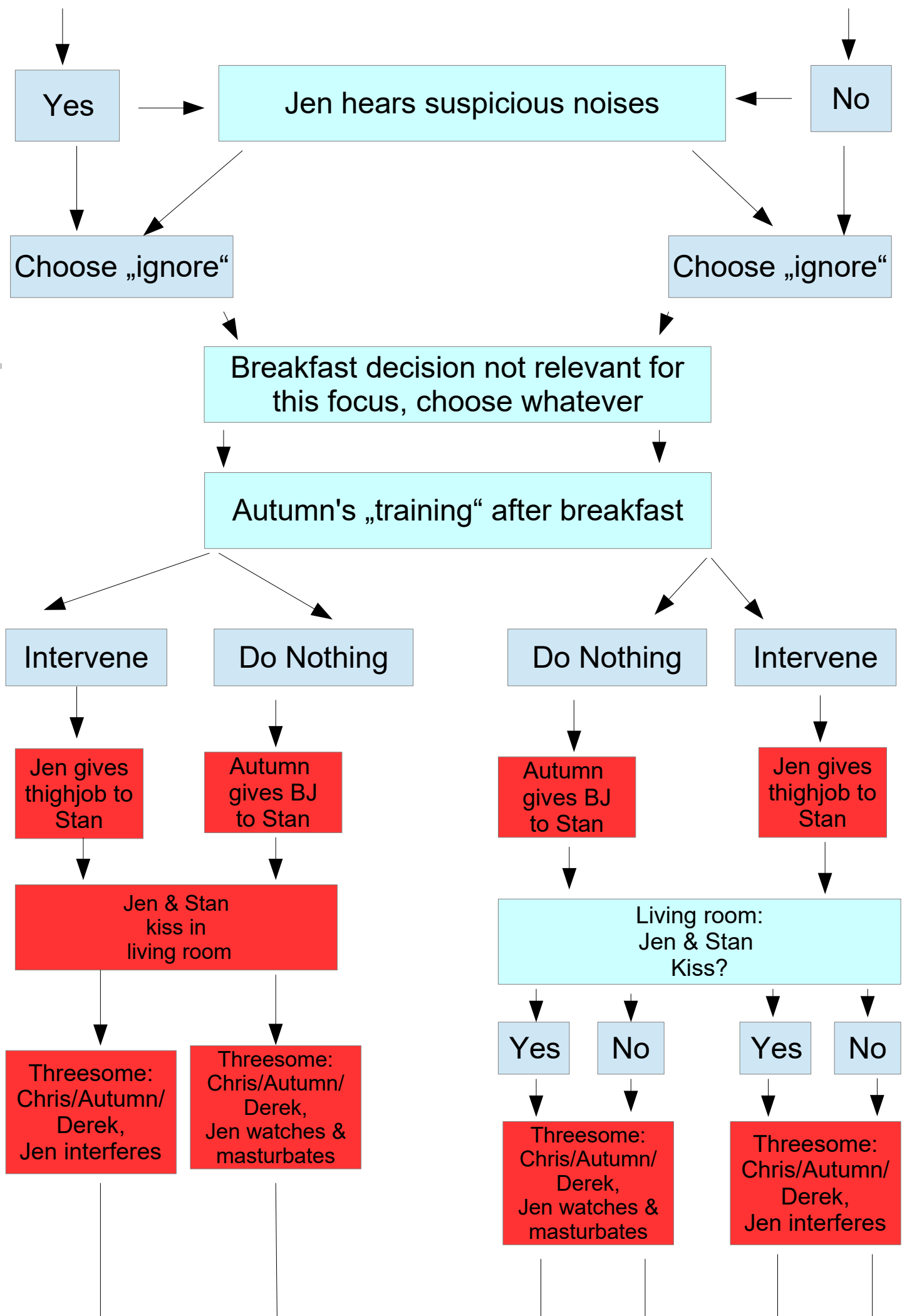
Blue Box = Decision

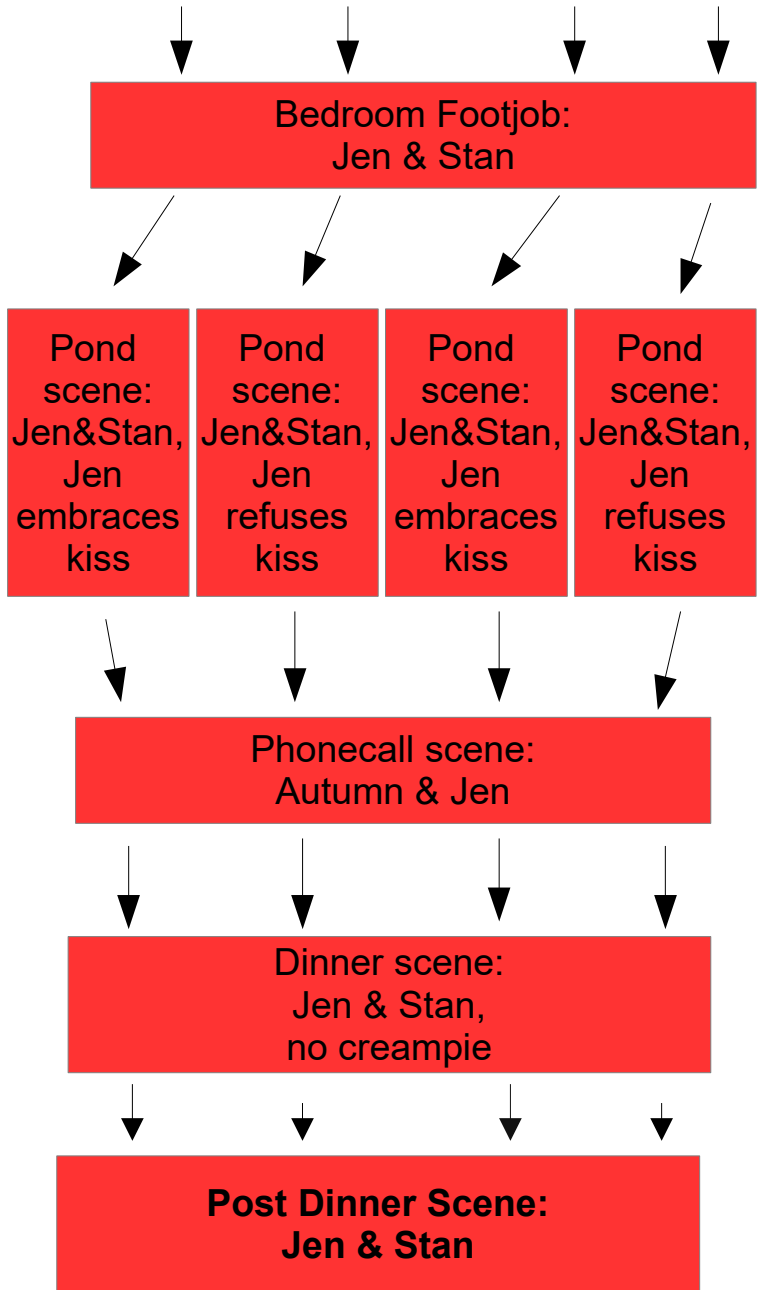
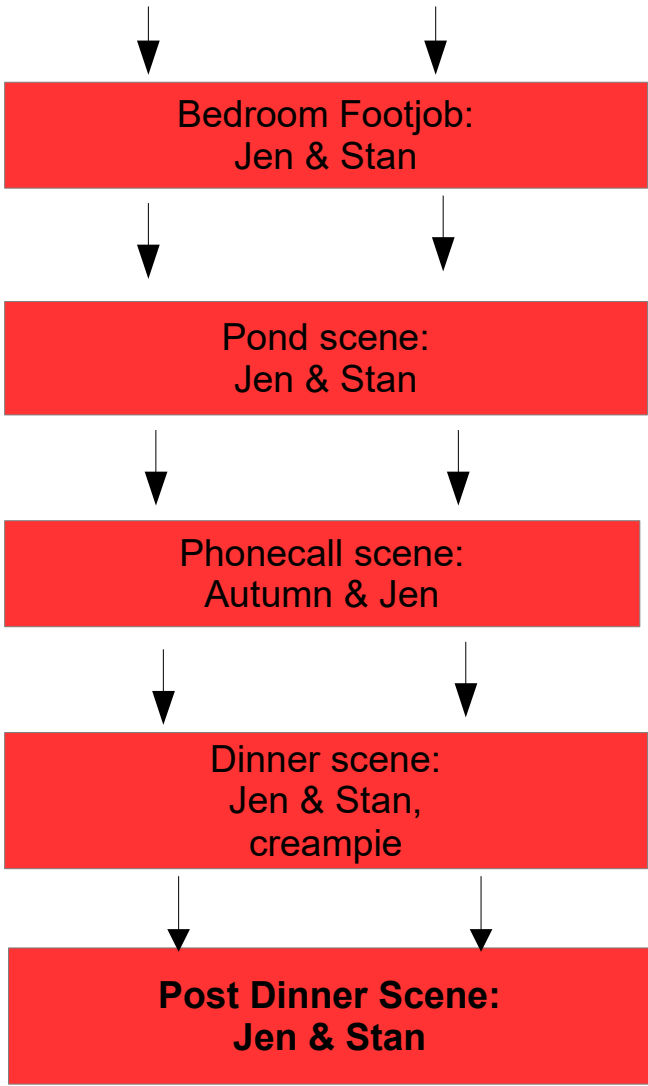
Deception Route

Note: This doesn't cover all choice variations that'll influence the endings on this route, but will get you to every, currently possible erotic scene

Stan Focus







Chris Focus

After arriving at the safe house: Stan wants to have Some „fun“.

Choose „Insist on taking a bath“

Jen and Chris interacting at the pond

Choose „Make a move on Chris“

Blowjob scene:
Jen & Chris

Sex scene:
Autumn & Stan

Give him a lapdance

Jen & Autumn entertaining the boys in the living room

Lapdance for Stan,
followed by Sex scene
with Stan

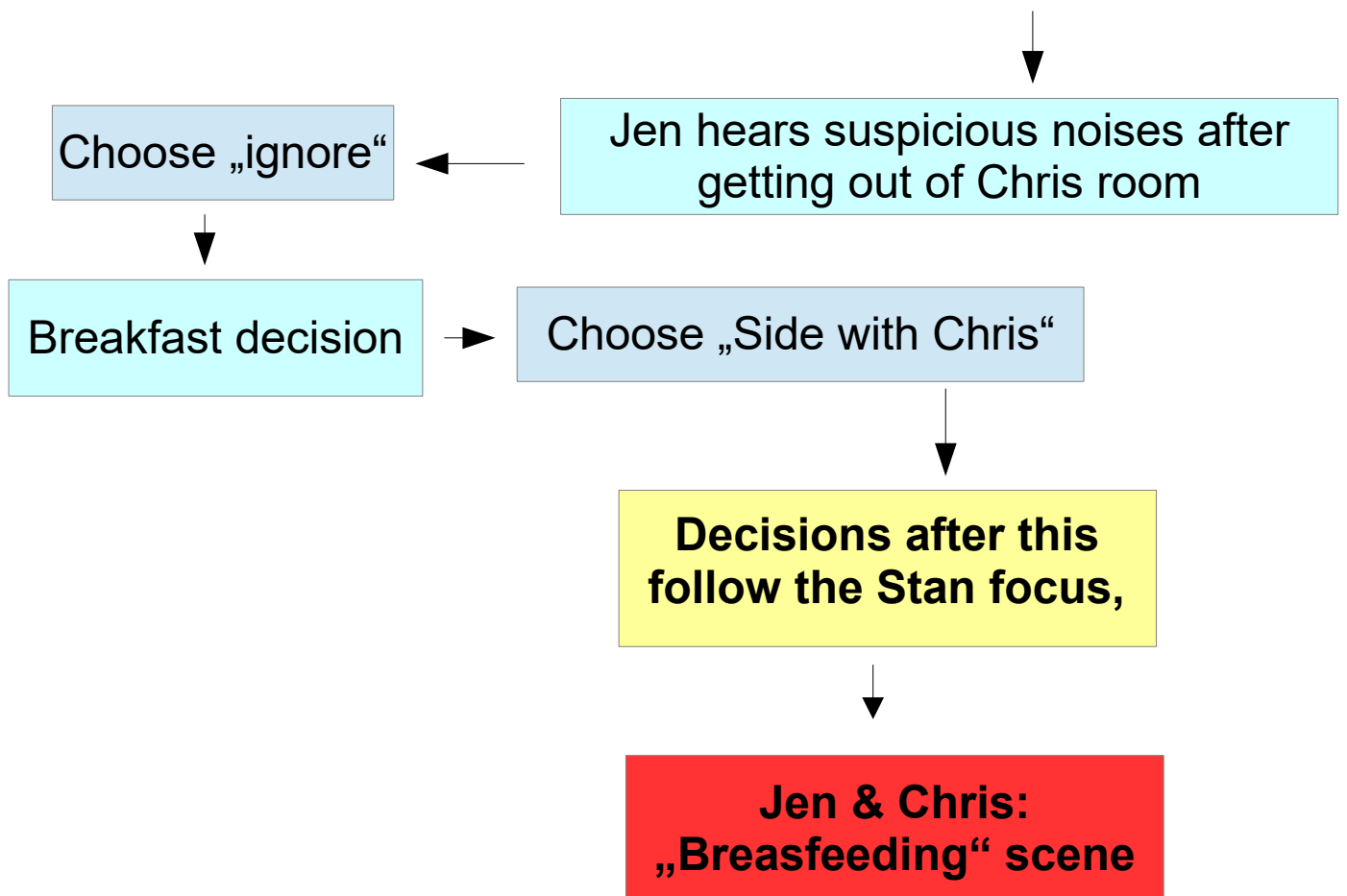
Get down and dirty with Autumn

Let him cum inside?

Scissoring with Autumn,
followed by Sex scene
with Stan

Decision not relevant for
this focus, choose whatever

Sex scene in Chris room:
Jen & Chris



Huang Focus

First relevant decision for this focus:
Hearing suspicious noises at night

Choose „Lets check it out“

Breakfast decision

Jen gets a glimpse of Huang and Jing fucking

Choose „Side with Huang“

Autumn's „training“ after breakfast
decision not relevant for this focus, choose whatever

Lesbian scene:
Jen & Jing

Kiss decision not relevant for this focus, choose whatever

Decisions after this follow the Stan focus,

Choose to use the device

Lesbian scene at the pond

Witnessing Huang & Jin at the pond

Crossroad: Did you fail the QTE while
Using the device?

No

Yes

